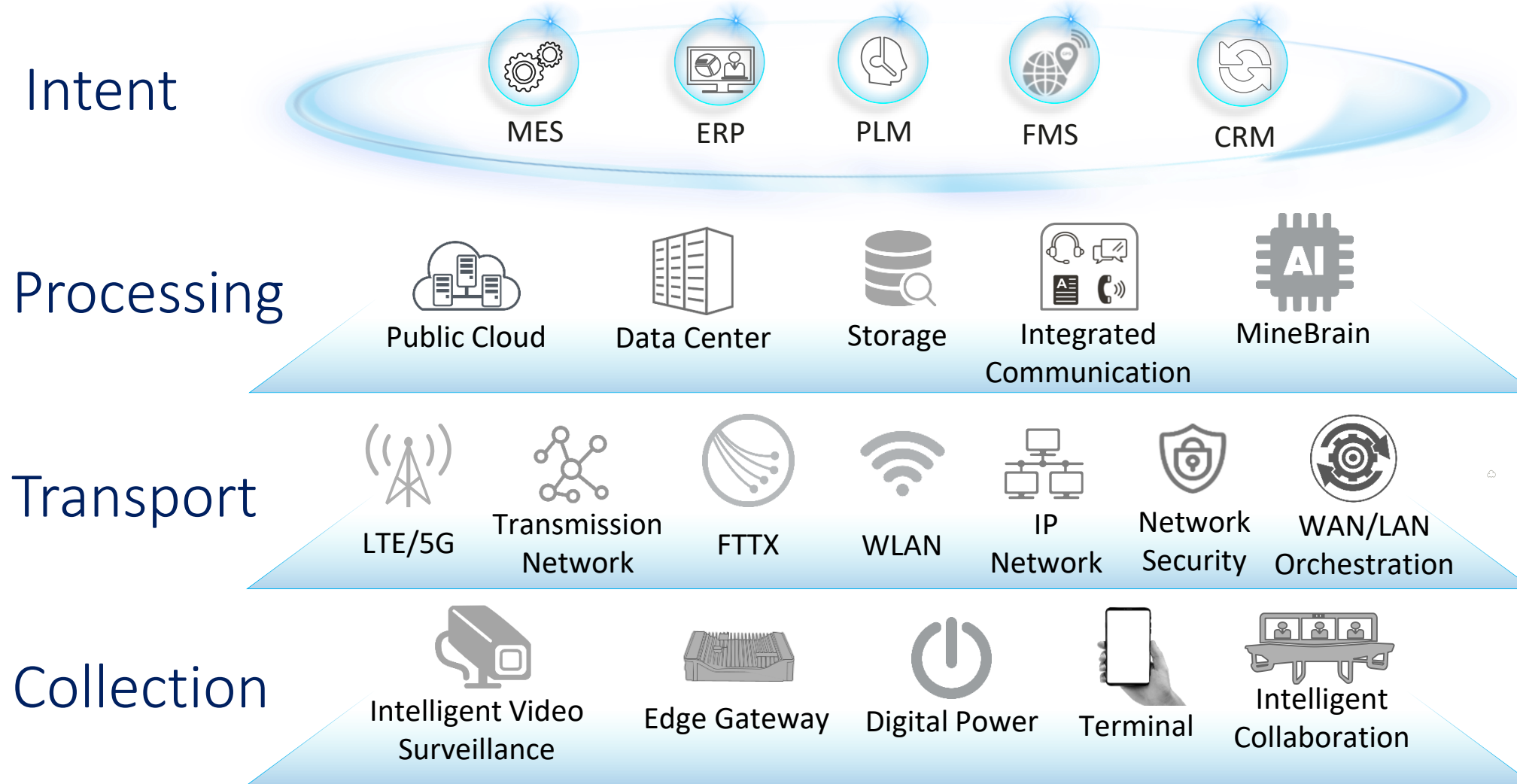


# HUAWEI MINING



# Huawei Portfolio Overview









Unified Management

Support and Services

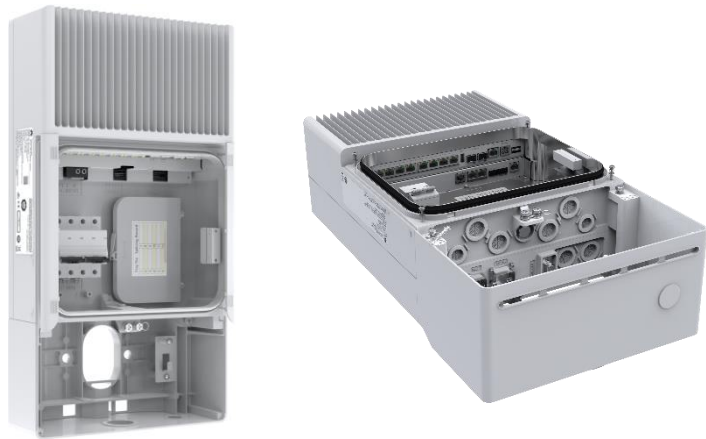
Building a Fully Connected, Intelligent World



# Huawei CloudCampus Product Portfolio

Controller	<p>Autonomous driving network (ADN) management and control system</p> <p> iMaster NCE</p> <ul style="list-style-type: none"><li>• LAN-WAN centralized management</li><li>• Automated network deployment</li><li>• Automated service provisioning</li></ul>	Analyzer	<p>Intelligent campus network analyzer</p> <p> iMaster NCE CampusInsight</p> <ul style="list-style-type: none"><li>• 360-degree journey visualization</li><li>• Fault locating in minutes</li><li>• Intelligent application optimization</li></ul>
Router	<p>NetEngine 5G AR</p> <p></p> <ul style="list-style-type: none"><li>• 5G ultra-broadband</li><li>• All ARs support SD-WAN</li></ul>	Firewall	<p>HiSecEngine AI firewalls, creating a comprehensive security defense system</p> <p></p>
Switch	<p>Building a high-quality campus bearer network with CloudEngine S series switches</p> <p></p> <ul style="list-style-type: none"><li>• Future-proof campus core: the industry's highest 100GE port density</li><li>• Long-distance power supply: unique 300 m PoE++</li><li>• Pay-as-you-grow: innovative software-defined multi-GE switches</li></ul>		
Wi-Fi 6	<p>AirEngine Wi-Fi 6, delivering gigabit-wireless experience everywhere</p> <p></p> <p>8760-X1-PRO   6760-X1/X1E   5760-51   5760-22W   6760R-51/51E   8760R-X1/X1E</p> <ul style="list-style-type: none"><li>• Widest coverage: 20% more coverage distance via smart antennas</li><li>• Wi-Fi &amp; IoT convergence: half the network construction costs</li></ul>		

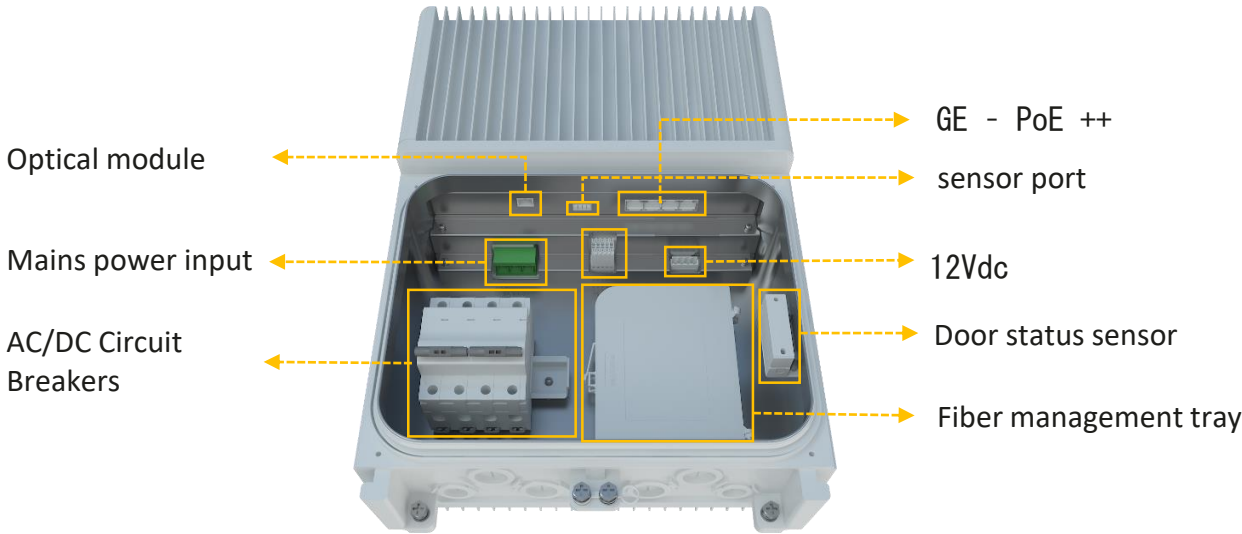
# Huawei Industrial Routing and Switching



CloudEngine S5735-S8P2X



CloudEngine S5735-L8P4X

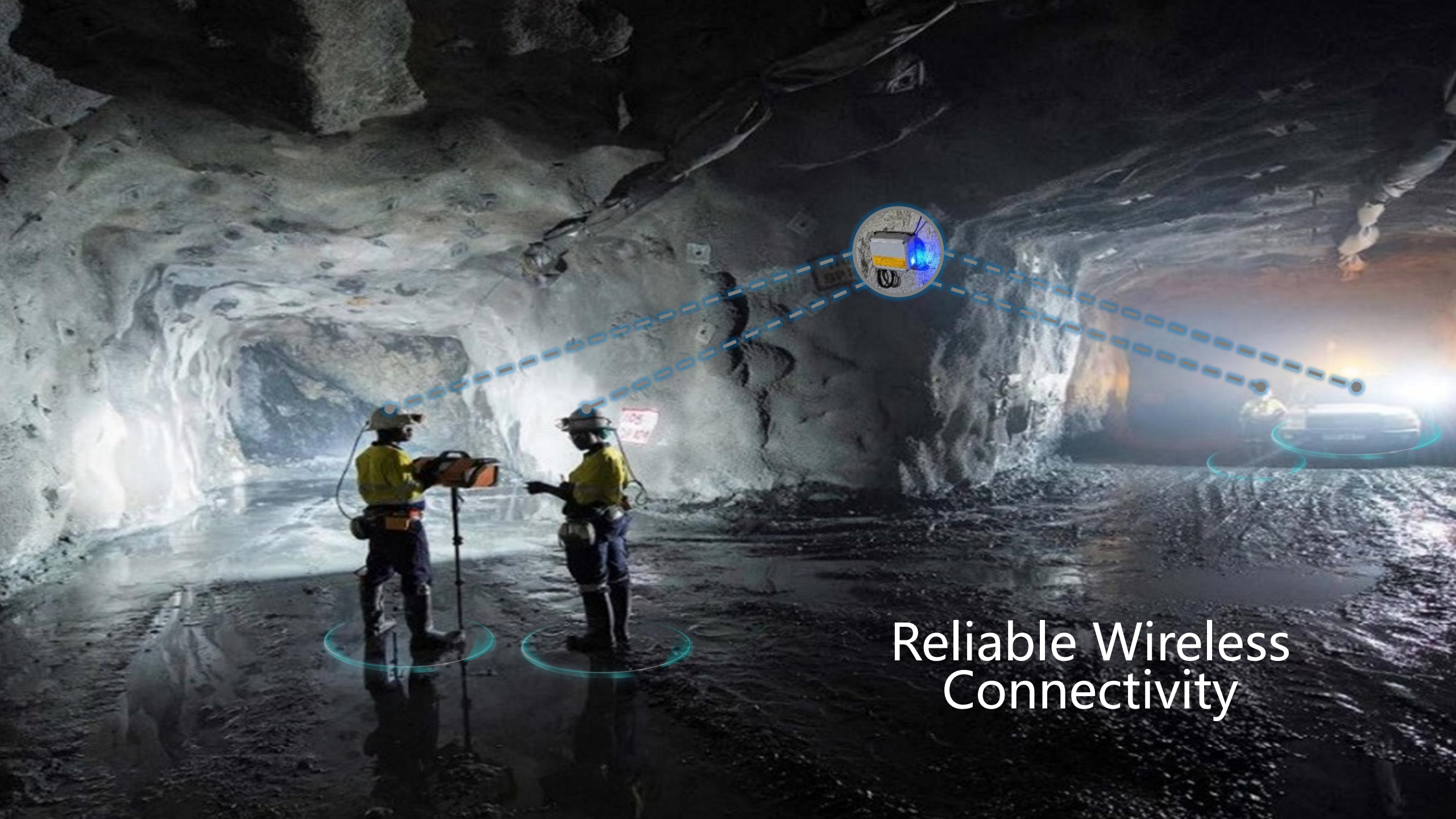


PowerCube 500



AR502H IoT Edge Gateways





Reliable Wireless  
Connectivity

# Huawei's Wi-Fi 6 AP Portfolio

## Wi-Fi 6 (802.11ax) Indoor AP



AirEngine 8760-X1-PRO



AirEngine 6760-X1



AirEngine 6760-X1E



AP7060DN



AirEngine 5760-51



AirEngine 6761-21



AirEngine 6761-21E



AirEngine 6761-21T



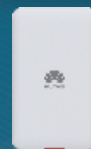
AirEngine 5761-21



AirEngine 5761-11



AirEngine 5760-22W



AirEngine 5761-12W



AirEngine 5761-11W

## Wi-Fi 6 (802.11ax) Wall-plate AP

## Wi-Fi 6 (802.11ax) Scenario Specific



AirEngine 6760-51EI

## Wi-Fi 6 (802.11ax) Outdoor AP



AirEngine 8760R-X1E



AirEngine 8760R-X1



AirEngine 6760R-51E



AirEngine 6760R-51

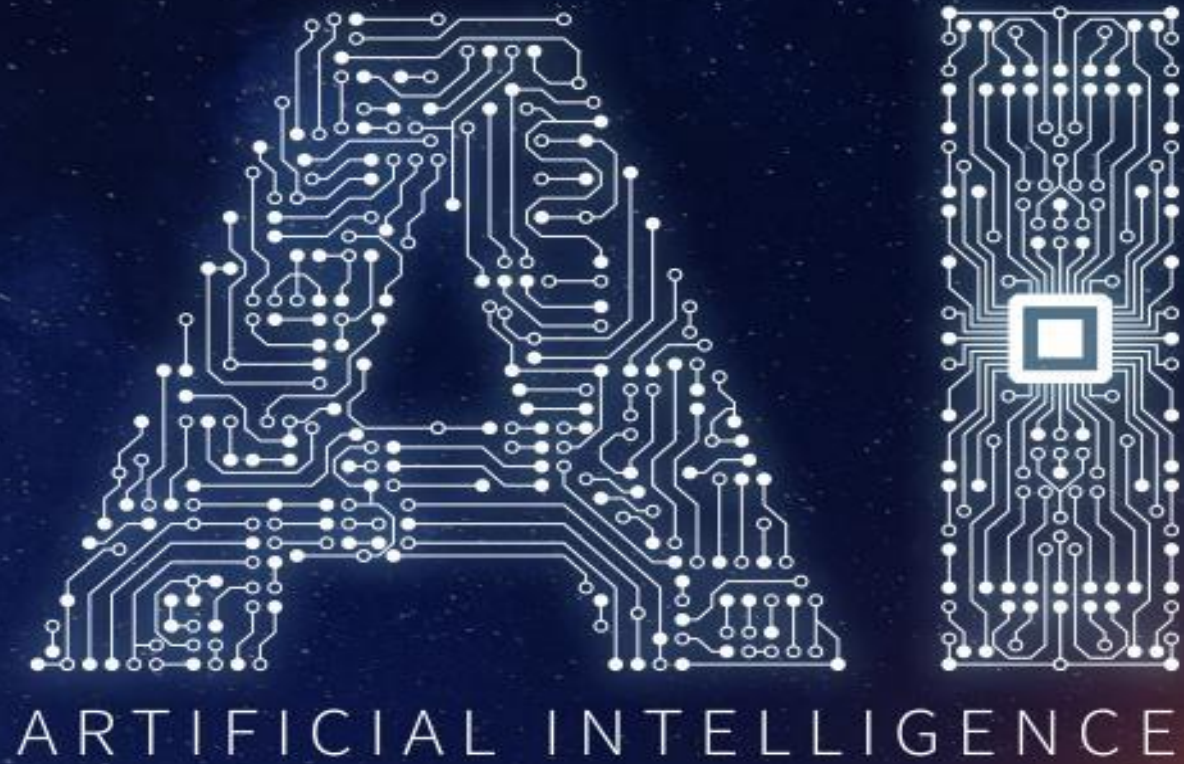


AirEngine 5761R-11E



AirEngine 5761R-11





# AI Technology Contributes Safe Operations for Mining

—— Smart Situational Awareness System by Machine Vision



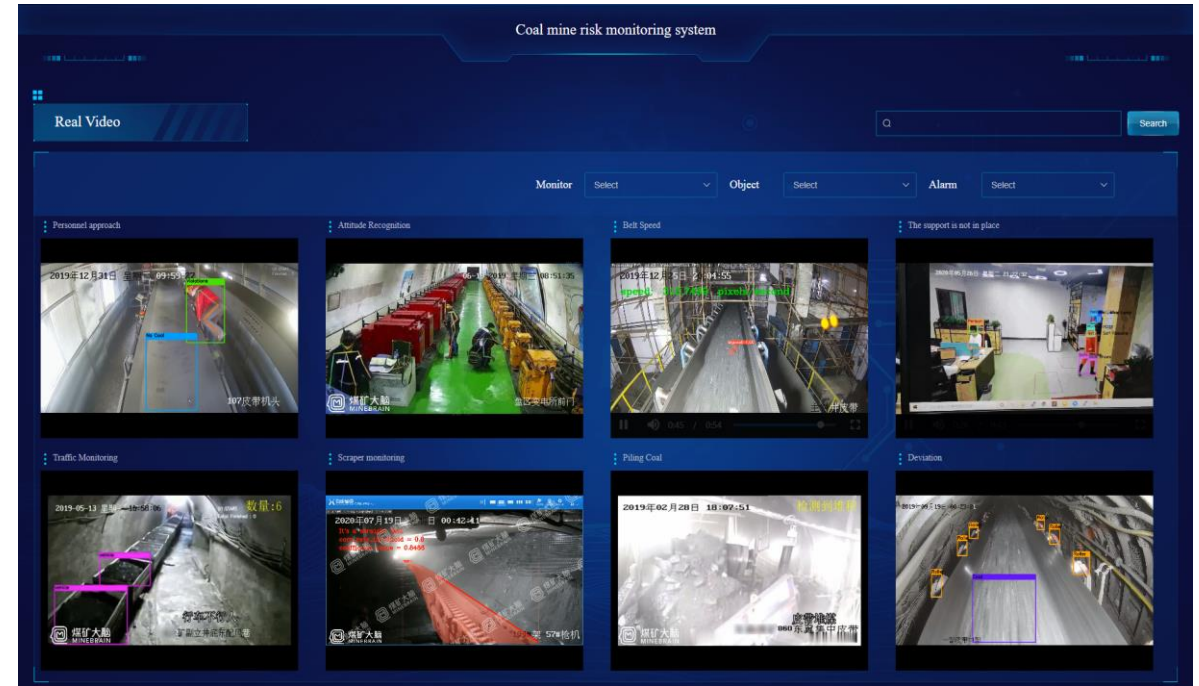
HUAWEI



# Unified and User Friendly Portal Manage the AI Application System



- Monitor the overall status of underground environment in real-time.
- Display alarm information of each camera at monitoring position in real-time.

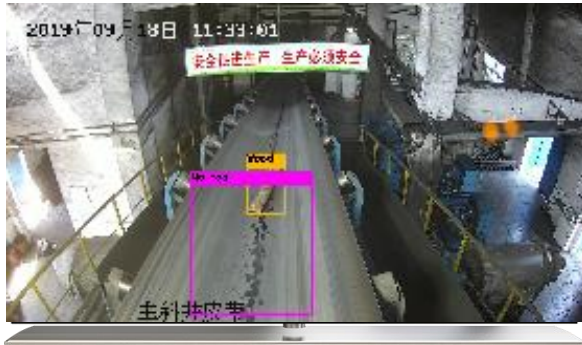


- View the video footage of each camera in real time.
- View the running status of the camera in real-time, the running status of the belt, machinery, and personnel.



# Effect of the Solution:

## Real-time AI Intelligent Identification for Belt's Abnormal Operations



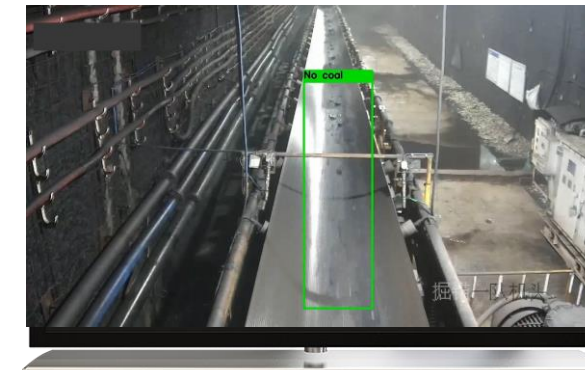
Detecting foreign object on belt



Detecting mineral piling up at transfer site



Detecting large block ore on belt or overweight



Detecting belt idling



Detecting belt deflection



Detecting violation of personal approaching

# Statistical Report Improve the Closed-loop Management of Anomaly

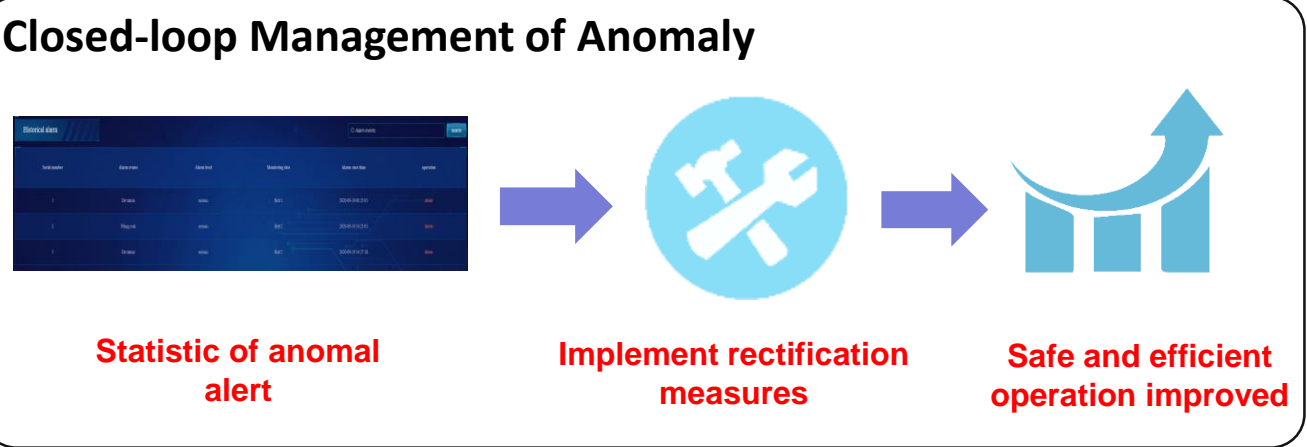


## Real-time anomaly analysis

- The trend chart shows the abnormal changes of each monitoring point by hour. Belt anomaly report: the total count of abnormalities, the count of deviations, the count of foreign object detections, the count of people approaching, the count of ore piling up, and the count of idling.

## Historical anomaly analysis

- The system supports the query of historical abnormal alarms through the query conditions of alarm type and alarm time. The charts are used to realize the visual display of abnormal type distribution, monitoring point distribution, and disposal situation distribution.





Bring digital to every person, home and organization  
for a fully connected, intelligent world.

Thank you.

